

AGENDA

Church Business Meeting
Word Tabernacle Church, Inc.
821 Word Plaza
Rocky Mount, NC 27804

August 28, 2021
9:00 am – 10:50 am

Meeting called by: As per Church By-laws

Invited Attendees: All church members, partners. Visitor welcome
Please read:

8:45 am – 9:05 am	Registration & Downloading Documents	Online Platforms
9:05 am – 9:10 am	Meeting Called to Order/Purpose Agenda Review	James D. Gailliard Senior Pastor
9:10 am – 9:12 am	Scripture Reading	Kyle Johnson Associate Pastor
9:12 am – 9:15 am	Prayer	Stephanie Battle Associate Pastor
9:15 am – 9:25 am	Morning Manna	James D. Gailliard Pastor
9:25 am – 9:55 am	2020 Audit Revenues and Expenses Financial Position	Angela W. Gailliard Chief Corporate Officer
9:55 am – 10:20 am	Reporting of Ministry and Campus Operations	Kyle Johnson (C3 Success) Stephanie Battle (Faith & Family) Trishonda Roberson (Community & Collaboration)
10:20 am – 10:35 am	State of Church Report Pastoral Emphasis	James D. Gailliard
10:35 am – 10:45 am	Questions & Comments (Please provide name, member #)	Church Members Online
10:45 am	Closing Prayer/Adjournment	

You have the right to:

- Know how the funds of an organization are being spent.
- Know what the programs you support are accomplishing.
- Know that the organization complies with federal, state, and municipal laws.
- Restrict or designate your gifts to a particular project within the organization's mission objectives.
- A timely and courteous response to your inquiries about finances and programs.
- Give cheerfully without being pressured by the organization.
- Obtain a copy of the organization's most recent audited financial statements
- Know that there is a responsible governing board providing oversight to the organization's mission.
- Know that all appeals for funds are truthful and accurate.

2 Cor 8: 20-21

NKJV - avoiding this: that anyone should blame us in this lavish gift which is administered by us—²¹ providing honorable things, not only in the sight of the Lord, but also in the sight of men.

NIV - We want to avoid any criticism of the way we administer this liberal gift. ²¹ For we are taking pains to do what is right, not only in the eyes of the Lord but also in the eyes of men.

The Message - We don't want anyone suspecting us of taking one penny of this money for ourselves. We're being as careful in our reputation with the public as in our reputation with God.



MORNING MANNA

Haggai 2:9

“The Best is Yet to Come” ...for me

The latter glory of this house shall be greater than the former, says the LORD of hosts. And in this place I will give peace, declares the LORD of hosts.’”

Haggai 2:9

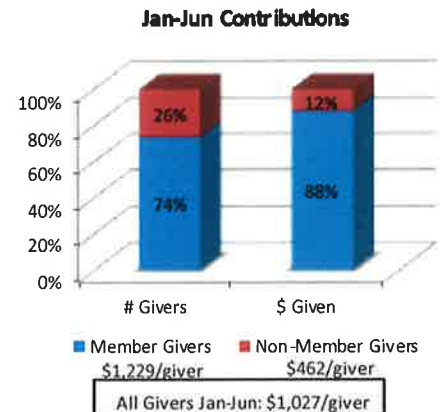
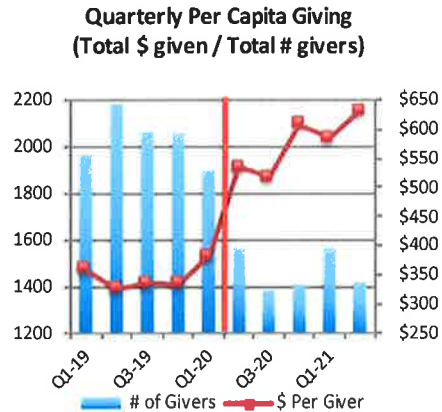
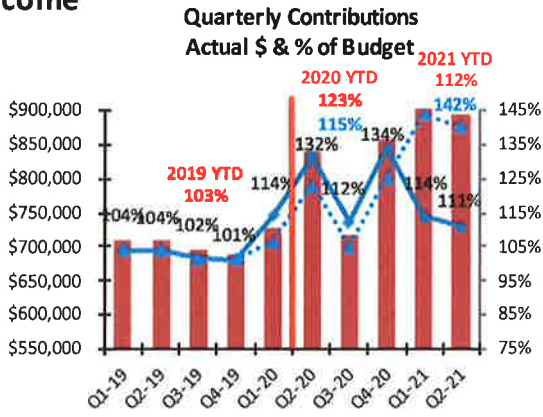
- I. Introduction
 - a. The debilitating dynamic of discouragement
 - b. The empowering effect of encouragement
- II. Adoration of the Past
- III. Admiration of the Present
- IV. Anticipation of the Prophetic



Word Tabernacle Church Financial Review January - June 2021



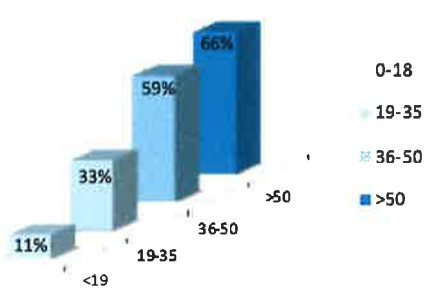
Income



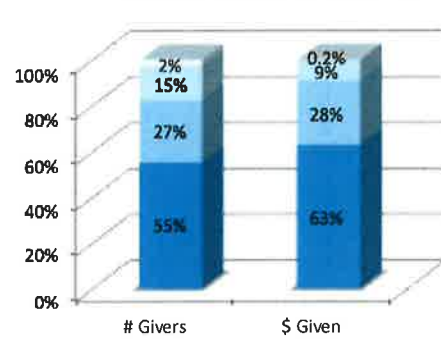
Income Review

- Contributions were \$1.81M, 112% of highest ever budget. Record qtrs with Q1-\$916K & Q2-\$894K.
 - Tithes - 120% of YTD budget.
 - Pastoral Support - 86% YTD budget.
 - Thrive - 90% YTD budget.
- Total Income was \$2.18M, 111% budget.
- Slight per capita dip Q1 but up to \$631 in Q2.
 - Increase from pre-COVID levels due to more dollars given by fewer givers.
- 51% of members (55% of adults) gave Jan-Jun &
 - 74% of total givers with 88% of gifts.
- 5% increase in total givers from 2H-20, but still down 23% (13% for member givers) from 1H-20.
- 144 1st time givers, 41% gave more than once.
- 11% of member youth still participating in giving!

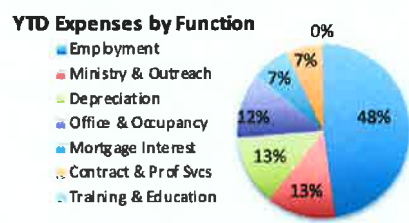
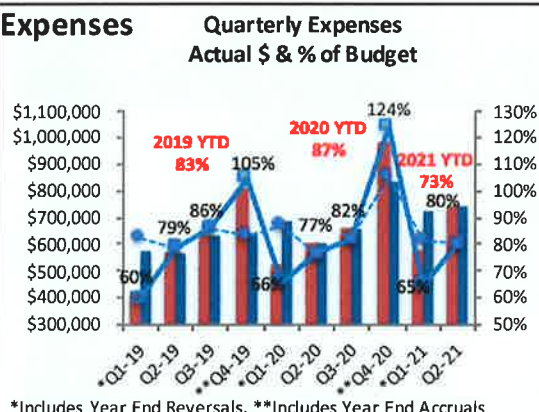
Member Participation decreased for all Age Groups Jan-Jun 2021



Member Jan-Jun Giving by Age



Expenses



Expense Review

- YTD expenses were 73% of budget.
- Q1 dip due to year end accruals.
- Centers with greatest expenses were WTC Inc, Bus Ops, Comm & Coll, and LD&CB.
- Centers with expenses 70% or more of budget were Media & Broadcast, WTC Inc, Bus Ops, and Faith & Family.
- Employment, ministry & outreach, depreciation, and office & occupancy were top functional expense areas.
- Continued significant capital investment at Word Plaza, and at other campuses.

Financial Position

YTD 2021	
Net Income	
Income	\$ 2,178,125
Expenses	\$ 1,318,961
Net Income	\$ 859,164
Cash Flow	
Deposits	\$ 5,263,007
Withdrawals	\$ 4,491,920
Net Cash	\$ 771,087

Balance Sheet 30-Jun-21	
Cash & Equivalents	\$ 1,712,593
Accounts Receivable	\$ 342,094
Fixed Assets	\$ 12,249,909
Accumulated Depreciation	\$ (1,655,933)
Total Assets	\$ 12,648,663
Current Liabilities	\$ 226,057
Mortgages/Loans	\$ 6,000,000
Total Liabilities	\$ 6,226,057
Fund Principal/Equity	\$ 6,422,606
Total Liabilities & Equity	\$ 12,648,663

- ### Financial Position Review
- Positive net income and positive cash flow
 - Income vs. Deposits, difference of \$3.1M due to:
 - (+) Construction Loan (\$2.5M)
 - (+) Grants & Accts Rec YE reversed (\$136K)
 - (+) Prior year deposits (\$59K)
 - (-) PPP Loan (\$191K) [Changed to grant]
 - Expenses vs. Withdrawals, difference of \$3.2M:
 - (+) Capital Expenditure (\$2.4M)
 - (+) Year end (YE) accruals (\$148K)
 - (+) Sales Tax Paid (\$115K)
 - (+) Prior period checks (\$83K)
 - (-) Depreciation expense (\$170K)
 - Debt Service Coverage Ratio (DSCR): 9.95 vs. 1.25
 - \$12.6M in Total Assets; \$6.4M in Equity

See Apr to Jun 2021 Analysis of Revenues & Expenses report for further details

Note: The Report Option to include Open Transactions is selected.

Accounts	YTD Actual (This Year)	YTD Budget (This Year)	% of YTD Budget Used (This Year)	Annual Budget (This Year)	% of Annual Budget Used (This Year)
Revenues					
Contributions					
4051-00-000 - Tithes - WTI	\$1,456,739.99	\$1,212,499.98	120.14 %	\$2,425,000.00	60.07 %
4052-00-000 - Offering - WTI	\$150,557.87	\$175,000.02	86.03 %	\$350,000.00	43.02 %
4055-00-000 - Missions - WTI	\$2,618.25	\$0.00	0.00 %	\$0.00	0.00 %
4060-00-000 - Pastoral Support - WTI	\$43,244.44	\$49,999.98	86.49 %	\$100,000.00	43.24 %
4064-00-000 - Thrive - WTI	\$157,018.19	\$175,000.02	89.72 %	\$350,000.00	44.86 %
Total Contributions	\$1,810,178.74	\$1,612,500.00	112.26 %	\$3,225,000.00	56.13 %
Ministry Income	\$147,739.95	\$337,003.65	43.84 %	\$619,900.85	23.83 %
Grant Income	\$219,890.96	\$16,449.48	1336.77 %	\$32,899.00	668.38 %
Interest Income	\$156.69	\$460.00	34.06 %	\$4,441.48	3.53 %
Other Income	\$158.90	\$1,500.00	10.59 %	\$3,000.00	5.30 %
Total Revenues	\$2,178,125.24	\$1,967,913.13	110.68 %	\$3,885,241.33	56.06 %
Expenses					
WTC Inc	\$409,233.12	\$413,475.06	98.97 %	\$826,950.00	49.49 %
Business Operations (1)	\$367,113.84	\$447,234.03	82.09 %	\$892,199.98	41.15 %
C3 (Childhd,Coll,Career) (2)	\$95,857.58	\$228,140.51	42.02 %	\$525,409.97	18.24 %
Faith & Family(3)	\$96,486.17	\$130,429.38	73.98 %	\$275,200.00	35.06 %
Community & Collaborations (4)	\$108,037.59	\$172,992.69	62.45 %	\$339,819.20	31.79 %
Performing Arts & Worship (5)	\$45,293.68	\$103,375.02	43.81 %	\$206,700.00	21.91 %
Culinary Arts (6)	\$13,570.36	\$29,699.94	45.69 %	\$59,400.00	22.85 %
Health & Wellness (7)	\$26,612.38	\$40,264.20	66.09 %	\$53,599.69	49.65 %
Media & Broadcast (8)	\$53,172.87	\$52,175.10	101.91 %	\$104,350.00	50.96 %
Leadership Dev & Cap'y Bldg(9)	\$103,583.81	\$194,250.00	53.32 %	\$388,500.00	26.66 %
Total Expenses	\$1,318,961.40	\$1,812,035.93	72.79 %	\$3,672,128.84	35.92 %
Net Total	\$859,163.84	\$155,877.20	551.18 %	\$213,112.49	403.15 %

Word Tabernacle Church
821 Word Plaza, Rocky Mount, NC 27804
Office of the Senior Pastor
James D. Gailliard
State of the Church Report
August 26, 2021

Dear Word-ites,

Grace and peace be multiplied to you and to your families.

There is only one proper place for me to begin and that is with a reminder to us that God is in control of all things (including a pandemic) and He is orchestrating all things and leading all things to the consummation of His perfect will. **Our greatest requirement is to follow Him in faith.** Let's take a moment to place things in context.

Christians have always and will always thrive in crisis. In AD 64, there was the Great Fire in Rome. Nero, the Caesar at the time, blamed Christians, probably to cast the suspicions off himself for starting it. Nero then launched a serious and horrific moment of persecution of the church. He would use Christians as living torches to light up his gardens at night during his chariot races. But all this persecution created a backlash for Nero. It began to win over the populace as they began to have a great deal of sympathy for Christians. Christians coming out of this persecution by Nero were seen as those who stood strong in their faith in Jesus Christ. **The church grew.**

As we try to find our way during our time of crisis, I think it is instructive to look back at how the Church has responded to similar crises in the past. We keep hearing the word "unprecedented" in reference to the COVID-19 pandemic we are facing. It is true that there are certain aspects of this epidemic that are unique to our time, but we have quite a few historical precedents from which we can gain valuable insights.

One of the more hopeful things we can take from such an exercise is recognizing that the growth of Christianity has been accelerated on multiple occasions through both persecution and plague. In fact, they often go hand in hand. We've all heard the expression, "*What didn't kill me, made me stronger.*"

Two such plagues will serve to illustrate the point. They are the Antonine Plague in the 2nd century and the Cyprian Plague in the 3rd. These epidemics ravaged the Roman Empire. It has

been estimated that between a quarter and a third of the population died, including three Roman emperors. **And Christians thrived in these crises – because that’s what we do.**

In addition to the plague, we also are living and ministering through a season of what has been called “*church rage*.” People are struggling at work and at home and as a result are under a lot of stress. Some people are struggling with real emotions like fear or mood disorders like depression. Some are dealing with medical, financial, political, and relational stress unlike anything they have dealt with before because the pandemic has made everything harder. Under that kind of stress, people get agitated, and the anger must come out somewhere. The church is an easy target. In the same way road rage is rarely about what happens on the highway, church rage is often not about what’s happening in the church. The person who barely cuts off another driver just bore the full weight of his unresolved issues in that moment. The church is made up of people with issues and those issues are going to be directed at us. So, don’t be alarmed because 95% of all problems in the church have nothing to do with the church. Since the church is far from perfect, as we move forward, we will continue to focus on problems we can actually resolve.

We are also dealing with the reality that it’s easier to be bolder and more opinionated from a distance than in person. Because the pandemic has created a physical distance we’ve had to rely on online outlets as our primary way to communicate. **Distance often causes desensitizing.** It’s never been easier to be known and to hide simultaneously than it is online. And it’s never been easier to take pot shots at leaders and institutions than it is now. Remember, for all the good in the online community, there’s some downsides. The downsides are it provides a platform that wasn’t always earned; it gives influence on those who haven’t always learned to responsibly use it; and it can reduce legitimate learning and discipleship to a “quote or scripture of the day”, imputing information or character that is simply not consistent with that person’s life.

These are indeed tough times culturally.

So, with these historical and cultural realities facing us, where does that leave Word Tabernacle Church?

Normally I share specifics but, in this report, I want to share the philosophy of the ministry as we move forward. I’d like us to focus on what to expect from membership at Word Tabernacle Church as we end this year and prepare for 2022. I’d like to share less about the pandemic and to the point of the morning manna, less about the past and more regarding how I see God moving prophetically in the future.

I believe the church, in times of uncertainty and instability, must respond with clarity and agility. Crisis rocks our emotions. It blurs our vision and rattles our thinking. In difficulty, people have a greater tendency to react emotionally rather than respond sensibly. This kind of response creates unnecessary chaos. We saw evidence of this when people were hurrying to buy all the paper goods off grocery store shelves. *“The church has always been looked to for stability, but in this season, it needs to show agility also.”*

Crisis forces ministry leaders to operate in three planes: being **situationally** aware, **biblically** faithful, and **culturally** astute. Leadership agility requires pivoting from normal procedures and methods, leveraging limited resources (money, time, and people), overcoming obstacles, and flexing with new information. Agility begins with the ability to recognize what is essential and what is extra. It requires leaders to have a learning posture — learning from God, each other and the experts who are elsewhere in the world.

Jesus started the church with clarity. *“Therefore go and make disciples of all nations, baptizing them in the name of the Father and of the Son and of the Holy Spirit, and teaching them to obey everything I have commanded you. And surely I am with you always, to the very end of the age.”* (Matt. 28:19-20)

He then empowered it with the agility of the leading of the Holy Spirit, the wisdom of his Word and the encouragement of his people.

We can't do the same old thing the same old way when the rules have changed. We must embrace experimentation as a natural part of the growth process.

Crisis teaches us to adjust in our strategy. In crisis, we must give ourselves permission to try new things, think new thoughts and find new sources of practical wisdom. We must lower our “risk rating” (how much information we need to be willing to act) and be OK with mistakes.

So, expect this as we move forward:

1. **We are going to have a big vision.** I know this is dangerous because in the same way vision is inspiring it can also be threatening. Vision is threatening because it challenges the status quo. It calls out the best in us and asks us to think bigger and think beyond ourselves. **The future is too exciting to prefer the past.** So, Word is home to people who think big and expect more from themselves.

2. **We are going to keep growing.** We have already celebrated 108 decisions this year. As a matter of fact, regarding our growth, we now have a larger percentage of members in Wake County than Halifax County, our members now live in 25 North Carolina counties, and we have the largest percentage of people actually becoming members who have made decisions than ever before in our church history. We continue to reach new people, baptize new people, and see people more hopeful than ever before. So, if you want to be a big fish in a small pond, this isn't the place. If you don't like crowds. This isn't the place. And that's not to say you are wrong. But this isn't "820" anymore. Things have changed and we are never going back to what we were. So, I invite you, your family, and your friends to get in on what God is doing. Remember, **what's at the heart of our faith is dying to self and not living for self.** So, Word is home to people who want to grow.
3. **We are going to keep reaching different people.** We continue to be a five-generation church that serves every age, gender, race, educational level, and socio-economic background. So, the gang is all here. As a result, little cliques of people will have to become more inclusive, and our ways of thinking will get challenged. If everyone in Word Tabernacle thinks the same, behaves the same, votes the same and looks the same, that would not be a very good representation of the church. So, Word is home to people that embrace diversity, equity, and inclusion.
4. **We are going to keep getting healthier.** We are committed to emotional, spiritual, physical, financial, and relational health. Period! So, if you are a gossiper, troublemaker, or just in it for self, this is likely not the place for you. We just don't have an interest in personal agendas, seeds of discord, drama, or toxicity. We are going to apply the Word, change our habits, alter our diets, go to counseling, read books, consult a coach, take a sabbatical and whatever else is needed to be healthy – in every area of our lives.
5. **We are going to move into a new worship center.** I understand there is a type of sentimental attachment to "820" or to our former sanctuary. Maybe you were married there or funeralized a family member or received Christ. Not everyone will like the colors or the design. Not everyone will agree with doing this during a pandemic. But we are moving in. We are moving in to advance the mission. We are moving in to represent Jesus. I hope you, your family, and your friends will join us. So, Word is home for people that support multiple centers of ministry excellence.

I hope you will join me in seeing this as the opportunity that it is. I am convinced that God glorifies himself and uses the church to do it, especially in times of crisis. If there is an "upside"

to this pandemic, it's that it's happening to all of us. We are all on a level playing field — people of every race, ethnicity, background, and bank account are all on equal footing. It reminds us that the things we have in common are much more fundamental than the differences that divide us. It's time we come together.

Jesus prayed that we would all be one so that the world would know we are his disciples (John 17:23). Our unity is a megaphone to the world. Crisis brings Christians together to overcome our common struggles through our common faith. The witness of our working together can create a new narrative about the value of faith communities in every community.

I think this is one of the greatest opportunities we will have in our generation to show what it means to be the church.

By God's grace, we can do this. And for God's glory, we will do this. Together. **Because we have the story of the greatest comeback of all time — the resurrection of Jesus.**

The message of the gospel — forgiveness for the past, power for the present and hope for the future — is exactly what our community needs now. The gospel will bring help, hope and healing to a broken, fallen, and fearful world.

In my State of the Church Report from February I shared the following, *“we will return to in person worship when it is safe for all of our members to return. We are a family, and we are not leaving anyone behind or out. We leave the wilderness when everyone can enter the promise land. Since I know everyone is anxious for a date, I am projecting those conditions will be met by the end of the summer. At this point my projection is we will likely return around Sunday, September 12, 2021.”* That projection wasn't far off from what appears will be our actual return date. Our updated return schedule is as follows:

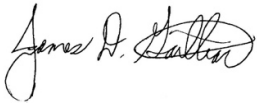
- Sunday, September 12, 2021 – Open House - 12:00 pm – 5:00 pm
- Sunday, October 17, 2021 – Homecoming Sunday – 9:00 am
- Sunday, November 7, 2021 – Tarboro Campus Opening – 11:00 am

In conclusion, we are firmly committed to our vision of *“Everyone Thriving”*, with a mission of *“People empowering people and communities in all areas of life to the glory of God”* resulting in every member growing, every member serving, and every member giving. If that's you – you

are in the perfect place. If that isn't you, we invite you to join us in this amazing family we call Word Tabernacle Church.

Thank you for all you do. I love you. I miss you. It is my honor to be your Pastor.

Still Thriving,

A handwritten signature in black ink, appearing to read "James H. Dalton". The signature is written in a cursive style with a large, looping initial "J".

P.S. I would be remised as your Pastor if I did not urge you to get vaccinated. As a church and as a nation we are almost entirely being hindered from forward progress and experiencing a post-pandemic life due to the inactions of the unvaccinated. Please, consult a physician and get vaccinated.